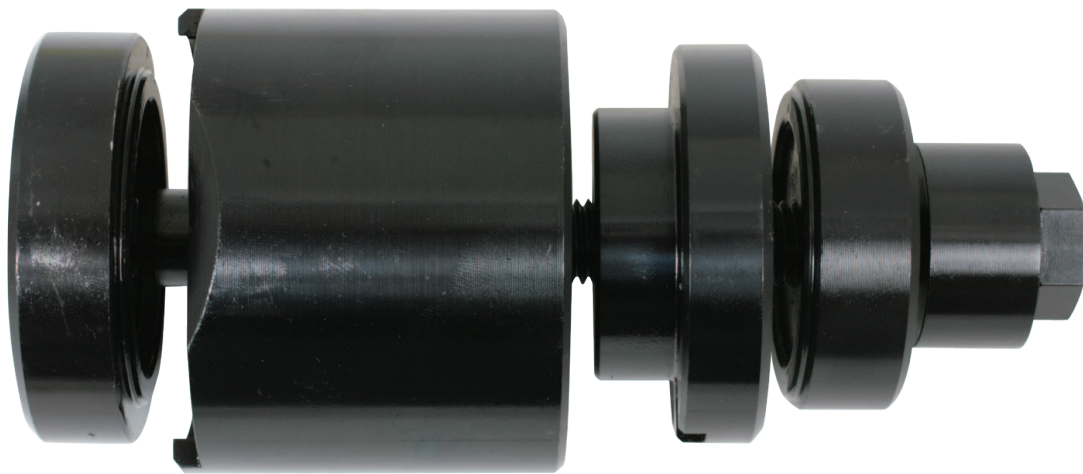


## Track Control Arm Bush Tool

Volkswagen Audi Group



### Description

This tool enables the removal and replacement of the front control arm bushes and permits alignment of the new bush with the console.

Made from high strength EN-16-T steel, the Centre Screw and Thrust Nut designs enhance the ease of use, however it is recommended not to use with air powered wrenches.

### Packaging

Tube

### Additional Information

For use on Volkswagen Polo III, Fox, Skoda Fabia and Seat Ibiza models (01)

24 July 2009

## Introduction

### Suspension Bush Remover/Installer

Volkswagen Audi Group

For removal and replacement of the Rear bonded plastic bush on the front Track Control Arm. (Console Bush). On all (2002-07) Seat Cordoba, Seat Ibiza, Skoda Fabia, Volkswagen Polo and Volkswagen Fox.

## Contents

- |  |                                     |
|--|-------------------------------------|
| <b>A.</b> Threaded centre bar (Replacement Part No 27009-02) | <b>D.</b> Extractor cup             |
| <b>B.</b> Thrust Nut (Replacement Part No 27009-06)          | <b>E.</b> Installer adaptor (rear)  |
| <b>C.</b> Extractor adaptor (small)                          | <b>F.</b> Installer adaptor (front) |

## Instructions

### Precautions

Due to differences in material and composition, it is recommended when replacing these bushes that both sides are replaced at the same time. This will ensure that wheel alignment and tyre wear problems are avoided.

### Always

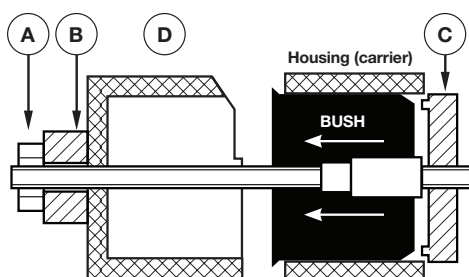
- Always refer to a reputable workshop manual for detailed instructions relevant to the vehicle
- Always ensure the car is securely supported by axle stands or ramps with wheels chocked and hand brake on
- Prepare the existing bush joint before attempting to remove it
- Clean off all rust, grime etc and prime with penetrating oil

- Leave the oil to soak in for quite a while before attempting to remove
- Inspect the tool for worn and broken parts before use
- The threads on the drive stud/bolt must be lubricated before and after use
- Care should be taken to align correctly
- Do not apply excessive force
- Do not use with an impact wrench
- If all attempts fail to remove the bush, re-lubricate and repeat
- Wear appropriate safety equipment
- Use common sense and caution at all times
- DO NOT USE AIR TOOLS WITH THIS PRODUCT

### Removal

The Bar (A) and Thrust Nut (B), should be lubricated before each use.

1. Support vehicle on axle stands paying particular attention to acceptable safety precautions
2. Remove the front wish bone (track control arm) (follow relevant workshop manual or manufacturers instructions)
3. Remove the aluminium bush carrier



4. Hold the Small extractor adaptor (C) against the back of the bush (shaped face of adaptor to bush)
5. Push Bar (A) through the bush, and thread into adaptor (C)
6. Fit Extractor cup (D) over the Bar so that the angled section fits with the angled part of the carrier. The face of the cup has a small 'c' shaped cutout that will align with a mark on the carrier and a moulded 'pip' on the face of the bush

7. Thread the Nut (A) onto the Bar enough to hold the tool in place. Tighten the Nut slowly to draw the bush through the carrier

### Replacement

1. Adaptor (E) locates on the back face of the carrier. Thread Bar (A) into the Adaptor. Slide the new bush over the Bar. Lubricating the outside of the bush with liquid soap, will help installation
2. Fit Adaptor (F), ensuring that its cut out and the bushes moulded 'pip' both align with the mark on the carrier
3. Thread the Nut (A) onto the Bar enough to hold the tool in place. Tighten the nut slowly to press the bush into the carrier
4. Refit the carrier to the vehicle. Refit the wishbone

