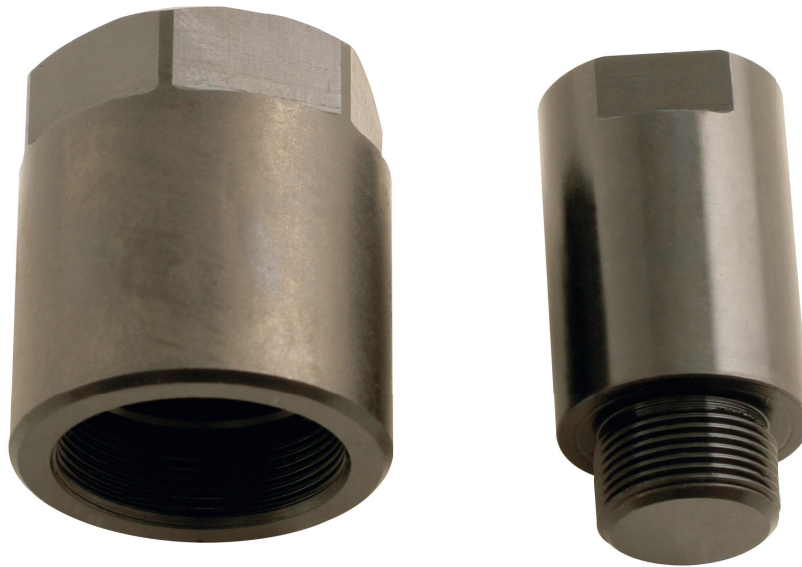


Diesel Injector Double Adaptor Removal Tool

Bosch



Description

This specially designed twin thread adaptor enables connection to both the M17 internal thread and M27 external thread. This adaptor is for use in conjunction with a 5/8" UNF Slide Hammer.

Packaging

Poly bag and header

Additional Information

Available separately:
Part No. 21050-01 - Slide Hammer Assy.
weight 600g.

11 July 2011